



浙江世菱电力电子有限公司
ZHEJIANG SHILING POWER ELECTRON CO.,LTD.

产品规格书

Specification of Products

产品名称：平板型

产品型号：800A

浙江世菱电力电子有限公司
ZHEJIANG SHILING POWER ELECTRON CO.,LTD.

厂址：浙江省 缙云县 五东工业区

电话：（0578）3012571 3615078

传真：（0578）3611180

邮编：321400

E-mail:smr@smrshiling.com

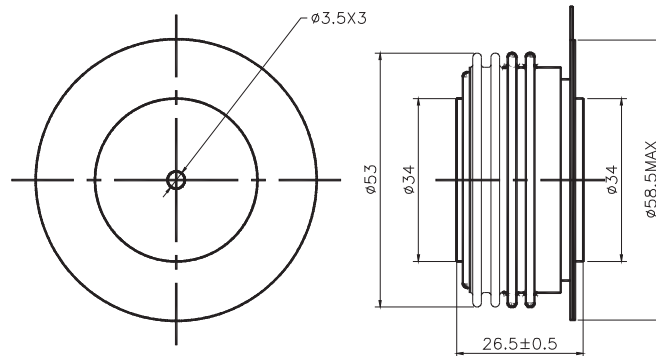
Http://www.smrshiling.com

拟制	审核	核准
丁国盛	曹剑龙	宗瑞

版本号：02 更新日期：2015.1.6

SYMBOL	CHARACTERISTIC	TEST CONDITIONS	T _J (C)	VALUE			UNIT
				Min	Type	Max	
I _{F(AV)}	Mean forward current	180 half sinewave 50Hz Double side cooled, T _S =55C	150			1651	A
I _{F(AV)}	Mean forward current	180 half sinewave 50Hz Double side cooled, T _S =90C	150			1214	A
V _{RRM}	Repetitive peak reverse voltage	V _{RRM} tp=10ms V _{RSM} = V _{RRM} +100V	150	200		1000	V
I _{RRM}	Repetitive peak current	at V _{RRM}	150			40	mA
I _{FSM}	Surge forward current	10ms half sine wave	150			21.5	KA
I ² T I	² T for fusing coordination	V _R =0.6V _{RRM}				2303	A ² s*10 ⁻³
V _{FO}	Threshold voltage		150			0.81	V
r _F	Forward slop resistance					0.23	mΩ
V _{FM}	Peak onstate voltage I	T _M =3770A, F=15KN	150			1.68	V
I _m	Reverse recovery current		150			90	A
t _{rr}	Reverse recovery time	I _{TM} =1000A, tp=1000 s, di/dt=-40A/s, V _R =50V				4.2	s
Q _{rr}	Recovery charge					189	C
R _{th(j-h)}	Thermal resistance Junction to heatsink	At 180° sine double side cooled Clamping force 15KN	150			0.033	C/W
F _m	Mounting force			10		20	KN
T _{stg}	Stored temperature			-40		160	C
W _t	Weight				260		g
Outline	ZT33cT						

Outline



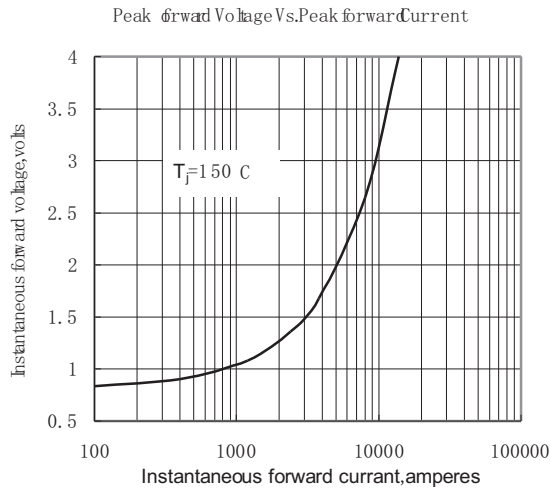


Fig. 1

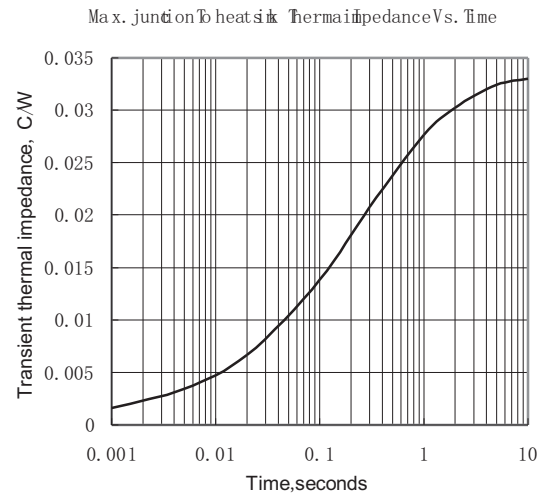


Fig. 2

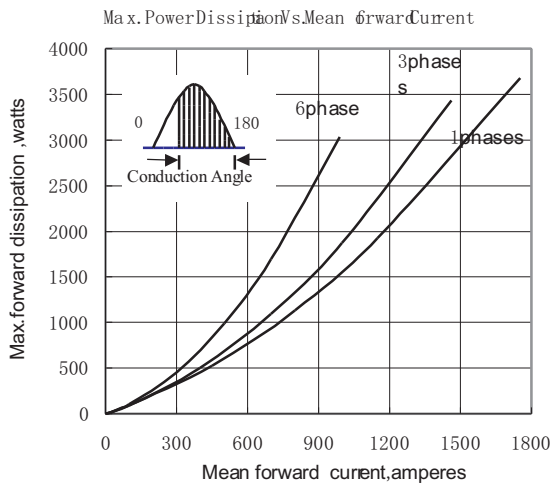


Fig. 3

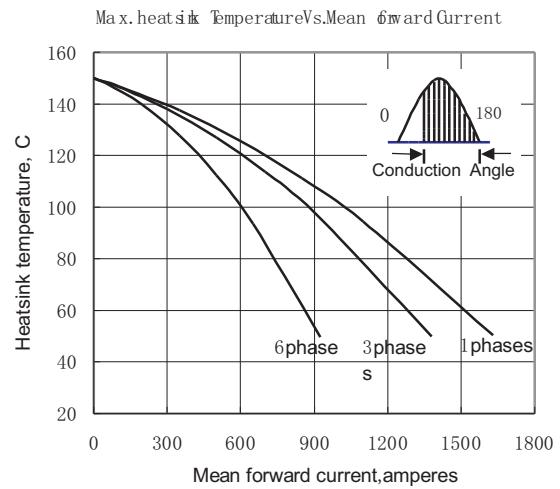


Fig. 4

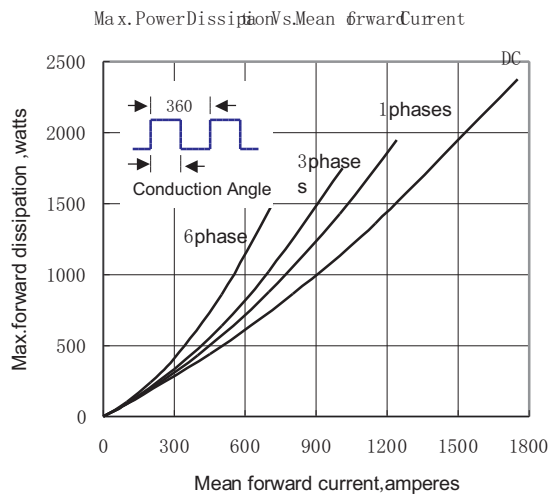


Fig. 5

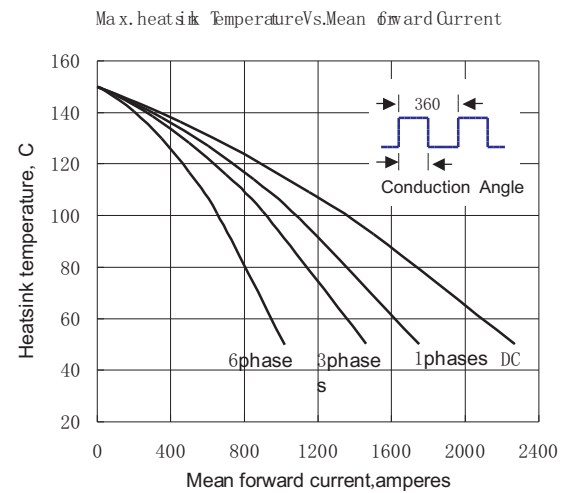


Fig. 6