

产品规格书

Specification of Products

产品名称：平板型

产品型号：600A

浙江世菱电力电子有限公司

ZHEJIANG SHILING POWER ELECTRON CO.,LTD.

厂址：浙江省 缙云县 五东工业区

电话：（0578）3012571 3615078

传真：（0578）3611180

邮编：321400

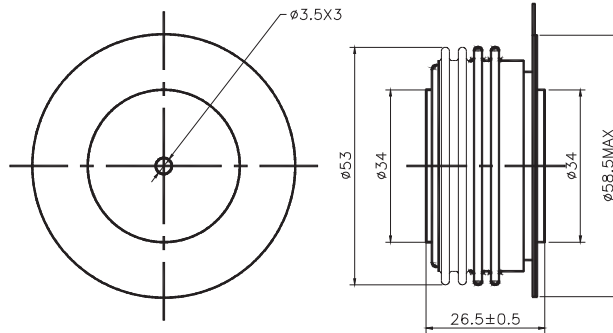
E-mail:smr@smrshiling.com

Http://www.smrshiling.com

拟制	审核	核准
丁国盛	曹剑龙	宗瑞

SYMBOL	CHARACTERISTIC	TEST CONDITIONS	T _j (C)	VALUE			UNIT	
				Min	Type	Max		
I _{F(AV)}	Mean forward current	180 half sinewave 50Hz Double side cooled, T _S =55C	150			1476	A	
I _{F(AV)}	Mean forward current	180 half sinewave 50Hz Double side cooled, T _S =90C	150			1078	A	
V _{RRM}	Repetitive peak reverse voltage	V _{RRM} tp=10ms V _{RSM} = V _{RRM} +100V	150	200		1000	V	
I _{RRM}	Repetitive peak current	at V _{RRM}	150			40	mA	
I _{FSM}	Surge forward current	10ms half sine wave	150			19.2	KA	
I ² T I	² T for fusing coordination	V _R =0.6V _{RRM}					1841	A ² s*10 ⁻³
V _{FO}	Threshold voltage		150			0.97	V	
r _F	Forward slop resistance						0.27	mΩ
V _{FM}	Peak onstate voltage I	T _M =2870A, F=15KN	150			1.74	V	
I _m	Reverse recovery current		150			82.9	A	
t _{rr}	Reverse recovery time	I _{TM} =1000A, tp= 1000 s, di/dt=-40A/s, V _R =50V					4.0	s
Q _{rr}	Recovery charge						165	C
R _{th(j-h)}	Thermal resistance Junction to heatsink	At 180° sine double side cooled Clamping force 15KN				0.033	C/W	
F _m	Mounting force			10		20	KN	
T _{stg}	Stored temperature			-40		160	C	
W _t	Weight				260		g	
Outline	ZT33cT							

Outline



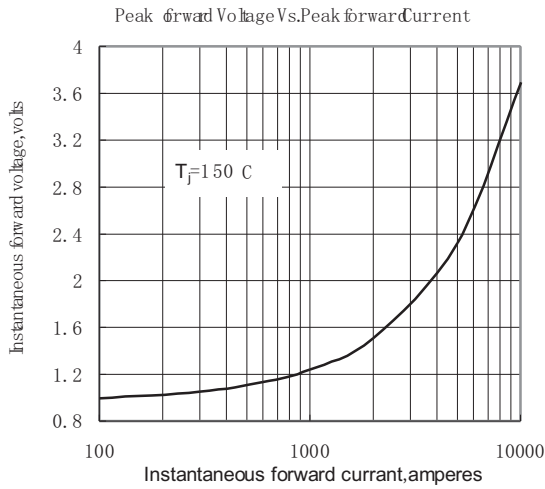


Fig. 1

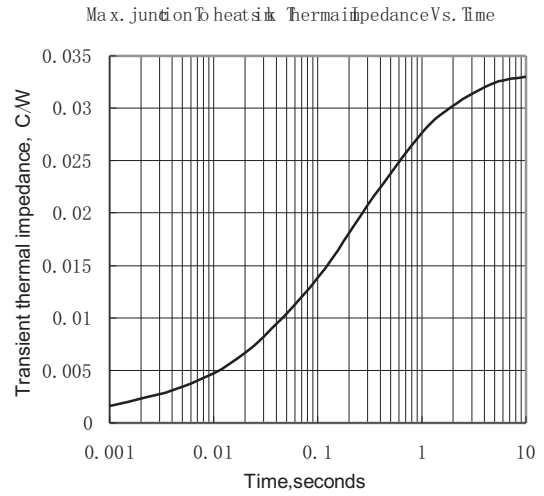


Fig. 2

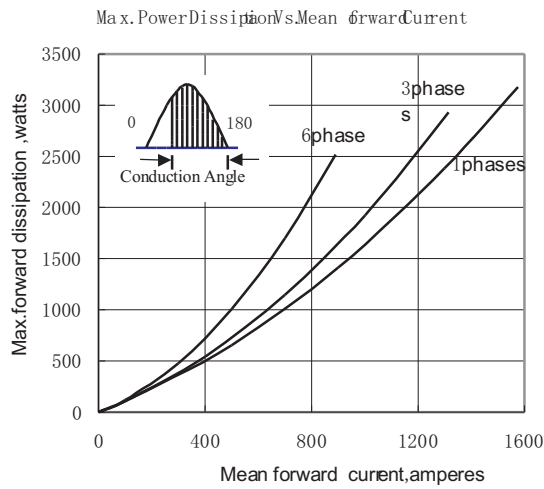


Fig. 3

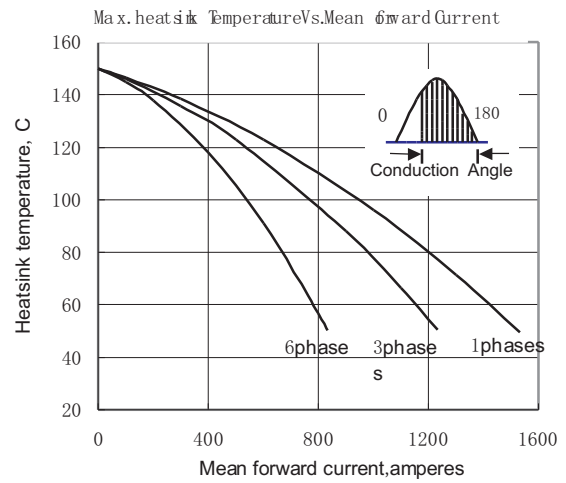


Fig. 4

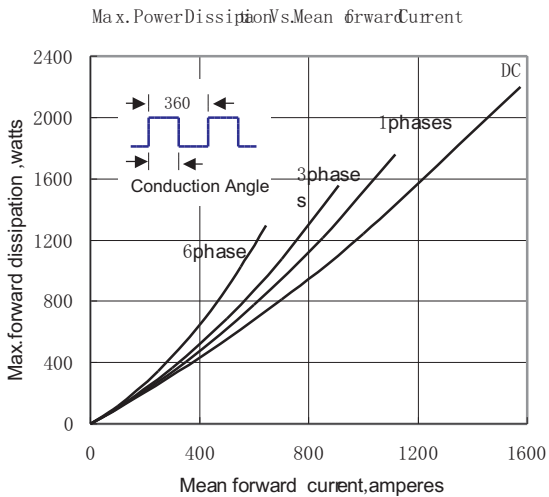


Fig. 5

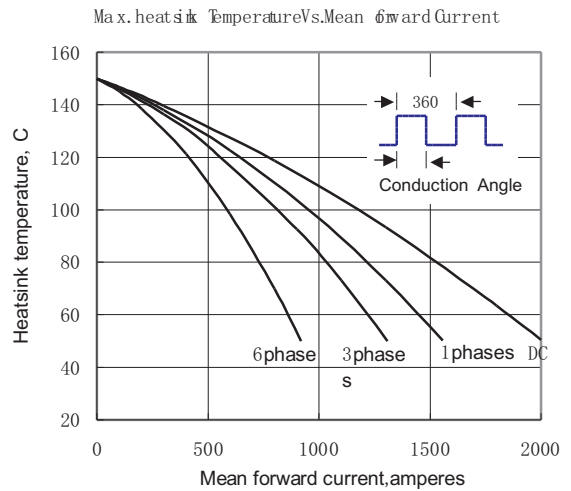


Fig. 6