

产品规格书

Specification of Products

产品名称：平板型

产品型号：2000A

浙江世菱电力电子有限公司
ZHEJIANG SHILING POWER ELECTRON CO.,LTD.

厂址：浙江省 缙云县 五东工业区

电话：（0578）3012571 3615078

传真：（0578）3611180

邮编：321400

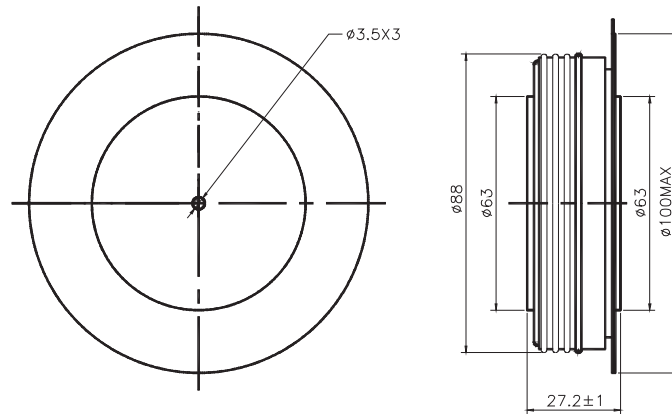
E-mail:smr@smrshiling.com

Http://www.smrshiling.com

| | | |
|-----|-----|----|
| 拟制 | 审核 | 核准 |
| 丁国盛 | 曹剑龙 | 宗瑞 |

| SYMBOL | CHARACTERISTIC | TEST CONDITIONS | T _j (C) | VALUE | | | UNIT | |
|----------------------|--|---|---------------------|-------|------|-------|------|----------------------------------|
| | | | | Min | Type | Max | | |
| I _{F(AV)} | Mean forward current | 180 half sine wave 50Hz Double side cooled, T _{FS} =55 C | 150 | | | 3098 | A | |
| I _{F(AV)} | Mean forward current | 180 half sine wave 50Hz Double side cooled, T _{FS} =90 C | 150 | | | 2289 | A | |
| V _{RRM} | Repetitive peak reverse voltage | V _{RRM} tp=10ms V _{RSM} = V _{RRM} +100 V | 150 | 3100 | | 3800 | V | |
| I _{RRM} | Repetitive peak current | at V _{RRM} | 150 | | | 160 | mA | |
| I _{FSM} | Surge forward current | 10ms half sine wave | 150 | | | 40.3 | KA | |
| I ² T I | ² T for fusing coordination | V _R =0.6V _{RRM} | | | | | 8110 | A ² s*10 ³ |
| V _{FO} | Threshold voltage | | 150 | | | 0.85 | V | |
| r _F | Forward slop resistance | | | | | | 0.14 | mΩ |
| V _{FM} | Peak on-state voltage | T _M =5400A, F=35KN | 150 | | | 1.61 | V | |
| I _{rm} | Reverse recovery current | | 150 | | | 180 | A | |
| t _{rr} | Reverse recovery time | I _{TM} =1000A, tp= 1000 s, di/dt=40A/s, V _R =50V | | | | | 7.6 | s |
| Q _{rr} | Recovery charge | | | | | | 684 | C |
| R _{th(j-h)} | Thermal resistance Junction to heatsink | At 180° sine double side cooled Clamping force 35KN | | | | 0.016 | C/W | |
| F _m | Mounting force | | | 30 | | 40 | KN | |
| T _{stg} | Stored temperature | | | -40 | | 160 | C | |
| W _t | Weight | | | | | 900 | g | |
| Outline | ZT60cT70 | | | | | | | |

Outline



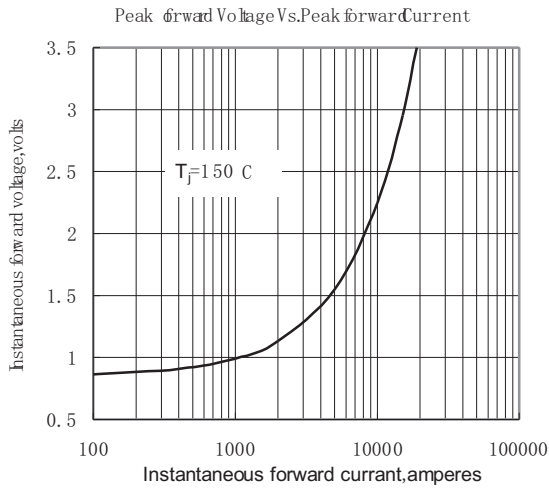


Fig. 1

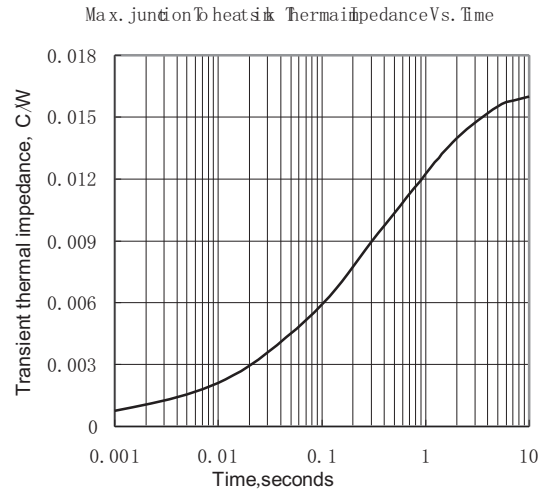


Fig. 2

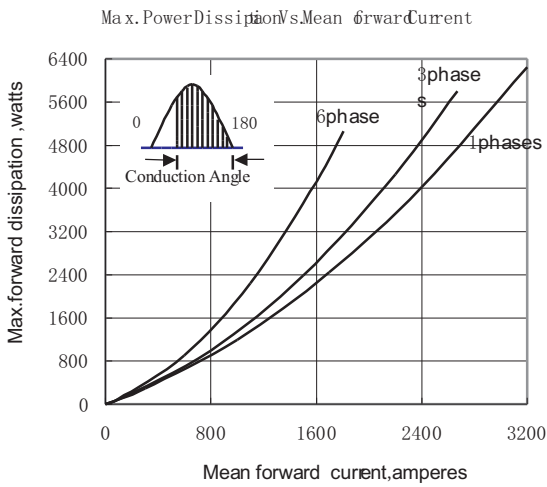


Fig. 3

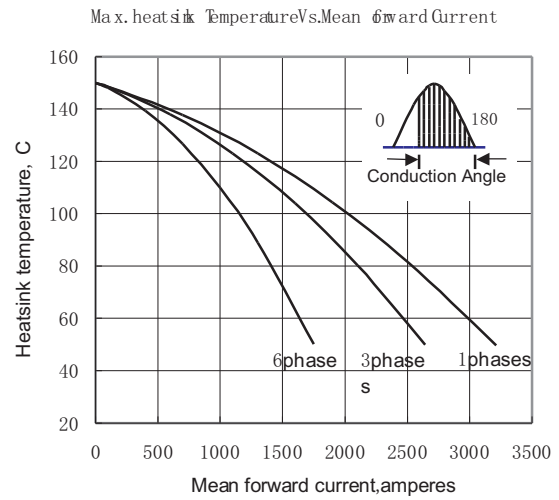


Fig. 4

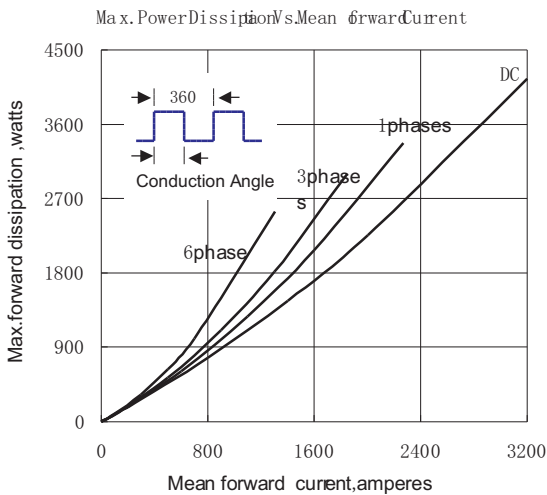


Fig. 5

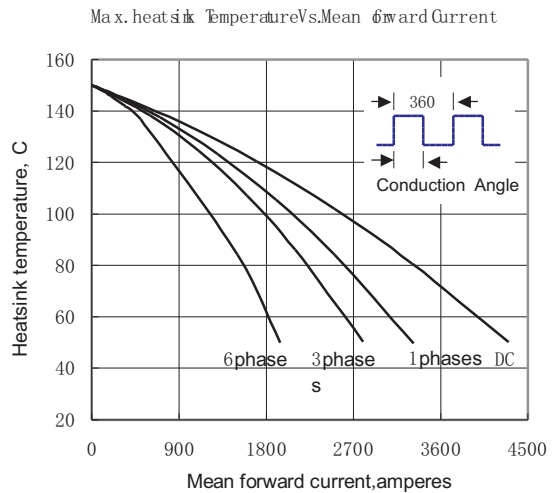


Fig. 6