

产品规格书

Specification of products

产品名称: 三相整流桥模块

产品型号: MDS80A-T15-1

浙江世菱半导体有限公司
ZHEJIANG SHILING SEMICONDUCTOR CO., LTD.

地址: 浙江省 丽水市 莲都区

电话: (0578) 3012571 3615078

传真: (0578) 3611180

邮编: 323000

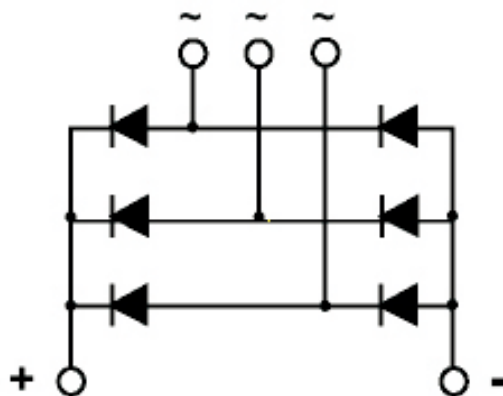
E-mail: smrshiling01@163.com

Http://www.smrshiling.com

拟制	审核	核准
林益龙	曹剑龙	宗瑞

SYMBOL	CHARACTERISTIC	TEST CONDITIONS	T _j (°C)	VALUE			UNIT
				Min	Type	Max	
I _o	DC output current	Three-phase full wave rectifying circuit, T _c =100 °C	150			80	A
V _{RRM}	Repetitive peak reverse voltage	V _{RRM} tp=10ms V _{RSM} = V _{DRM} &V _{RRM} +200V	150	600		2200	V
I _{RRM}	Repetitive peak current	at V _{RRM}	150			8	mA
I _{FSM}	Surge forward current	10ms half sine wave	150			0.8	KA
I ² t	I ² T for fusing coordination	V _R =0.6V _{RRM}				3.2	A ² s*10 ³
V _{FO}	Threshold voltage		150			0.80	V
r _F	Forward slop resistance					7.0	mΩ
V _{FM}	Peak forward voltage	I _{FM} =80A	25			1.1	V
R _{th(j-c)}	Thermal resistance Junction to heatsink	Single side cooled				0.320	°C /W
V _{iso}	Isolation voltage	50Hz, RM. S, t=1min, I _{iso} : 1mA (max)		2500			V
F _m	Terminal connection torque (M5)				4.0		N.m
	Mounting torque (M6)				5.0		N.m
T _{stg}	Stored temperature			-40		125	°C
W _t	Weight				154		g
Outline							

OUTLINE DRAWING & CIRCUIT DIAGRAM



Rating and Characteristic

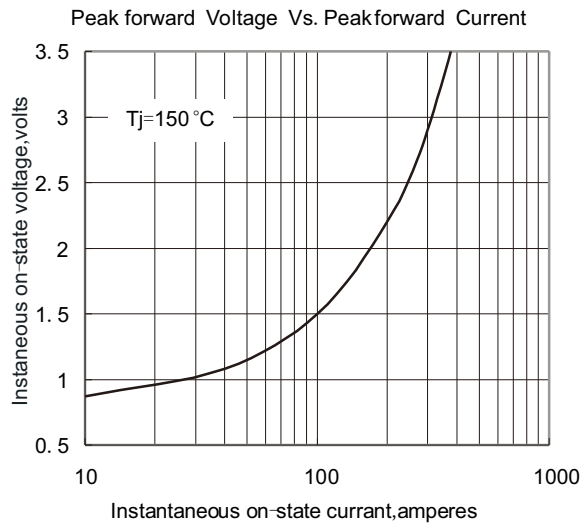


Fig. 1

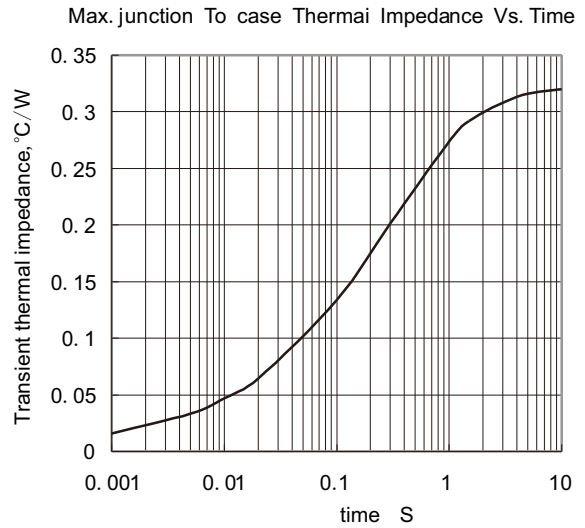


Fig. 2

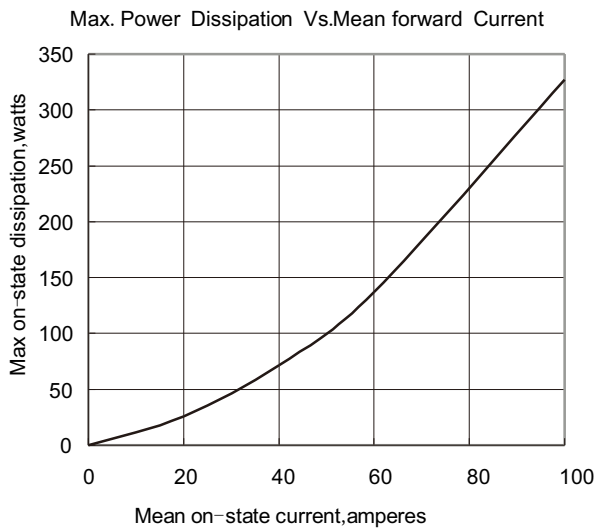


Fig. 3

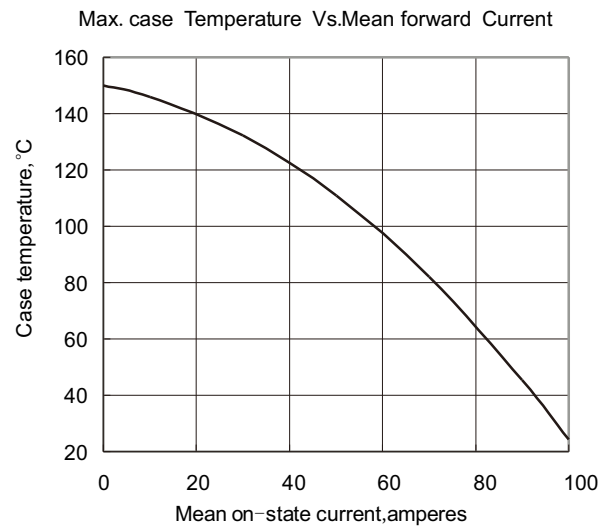


Fig. 4

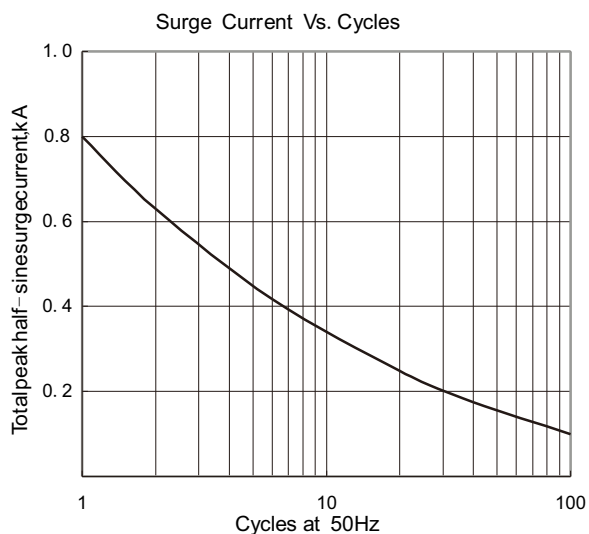


Fig. 5

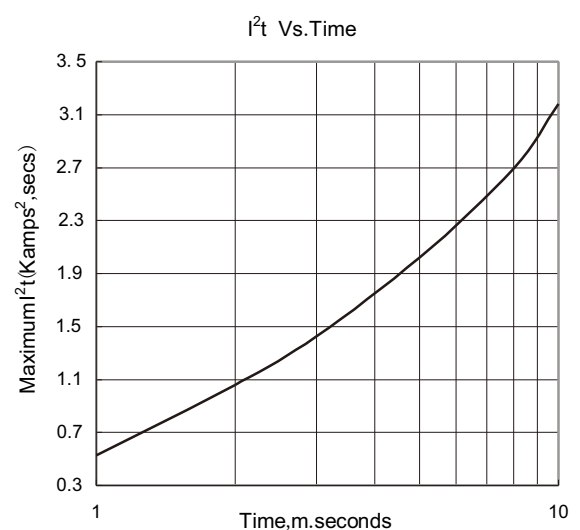
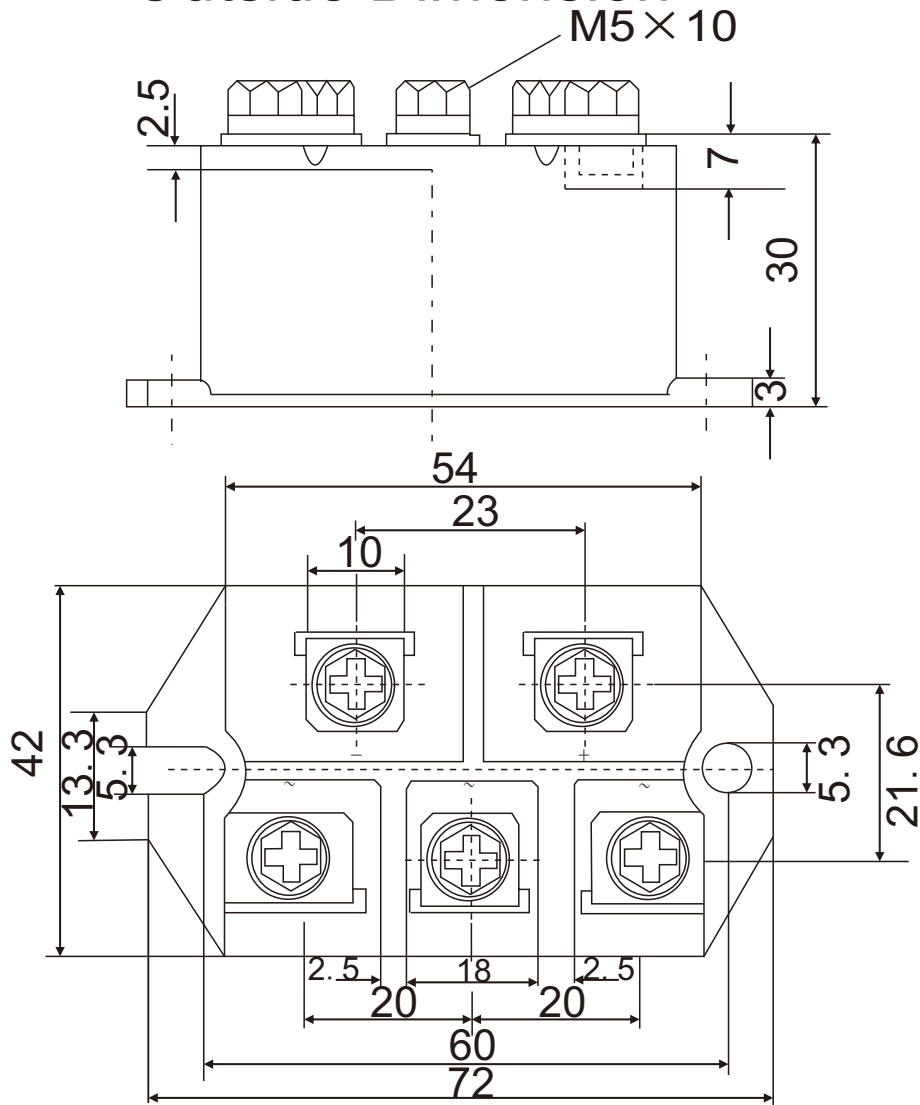


Fig. 6

Outside Dimension



主要零部件明细表

序号	代号	名称及规格	材料	数量	技术要求	供应商
1	SL-T15A-1	塑料壳	PBT	1	表面颜色均匀，韧性好，耐高温170℃情况下颜色无任何变化	正达配件厂
2	SL-T15A-2	塑料盖	PBT	1	表面颜色均匀，韧性好，耐高温170℃情况下颜色无任何变化	正达配件厂
3	SL-T15A-3	底板 (77.5X37.5X3)	T2紫铜	1	平面平整不上凹，两端应有弧形上翘，镀层结合力好，细腻均匀，可焊性好。	正达配件厂
4	SL-T15A-4	基片 (44X34X0.65)	氧化铝陶瓷	1	无毛刺、麻点，不变形，镀层均匀、干净基片平面度不超过0.2mm，AC2300V, 历时1min不击穿	正达配件厂
5	SL-T15A-5	电极	T2紫铜	5	镀层均匀、干净，无色差，镀层不剥离、破碎、可焊性好	正达配件厂
6	SL-T15A-6	芯片	Zp φ 11	6	$I_{FM} = 80A$, $V_{FM} \leq 1.1V$, $I_{RRM}(150^{\circ}C) \leq 1.5mA$, $I_R(25^{\circ}C) \leq 3 \mu A$	七七七电子
7	SL-T15A-7	M5X10组合螺丝		5		正达配件厂
8	SL-T15A-8	M5螺母		5		正达配件厂
9						
10						
11						
12						
13						
14						